

ZowiePTZ App Quick Start Guide

➤ Preparation

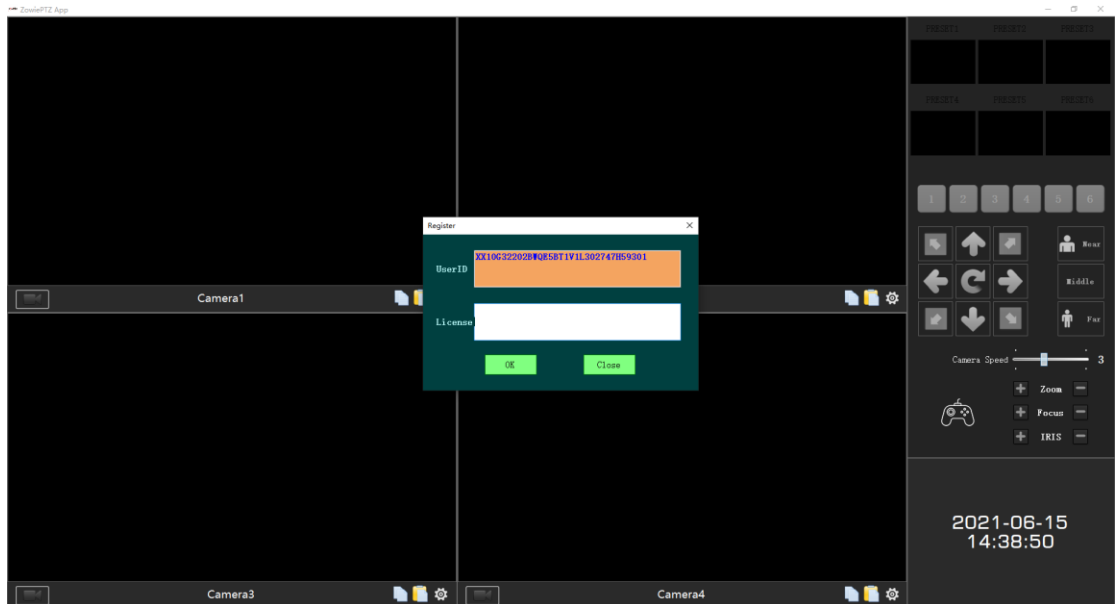
1. Host Configuration
 - Cpu: i7 seven generations or more
 - Memory: above 8G
 - Graphics card: no specific requirements
 - Operating system: 64-bit windows operating system
2. LAN connect to all cameras

➤ Software registration

1. Double click the camera control program



2. Software registration, enter the license, click "OK" to complete the activation (please send the user ID to Amazon message center to get the license.)



➤ Interface function introduction



- Part 1: Signal source display area
- Part 2: Preset position area
- Part 3: PTZ control area
- Part 4: Camera control area
- Part 5: System time display area

➤ Signal source channel introduction

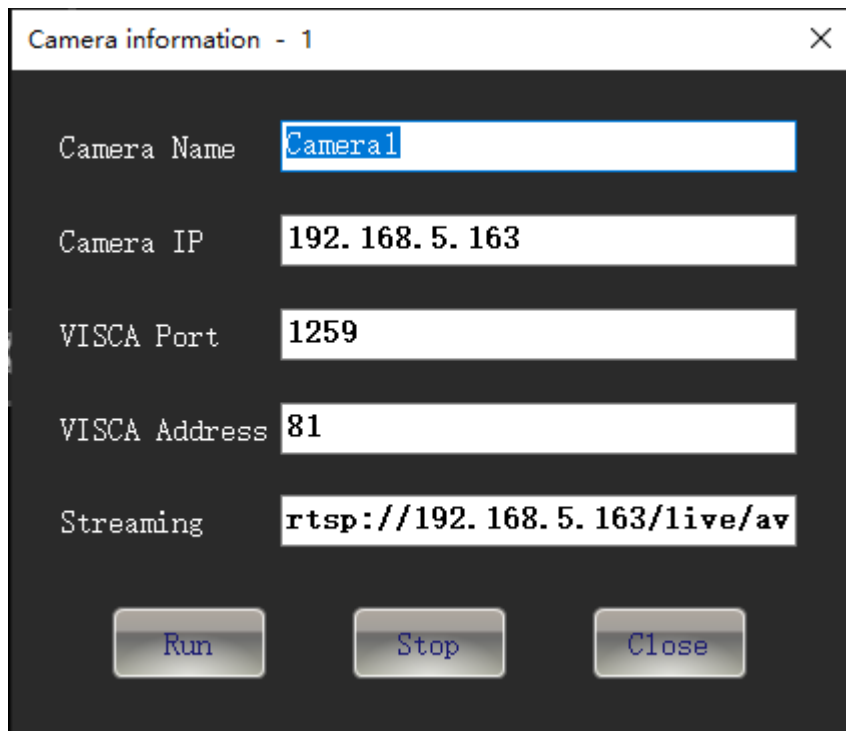


1. The record button; it can record the video.

2. Camera name
3. Copy (copy the current camera's setting)
4. Paste (paste the camera's setting)
5. Set up the Camera's information

➤ Camera information

Click the "set up"



Camera information - 1

Camera Name: Camera1

Camera IP: 192.168.5.163

VISCA Port: 1259

VISCA Address: 81

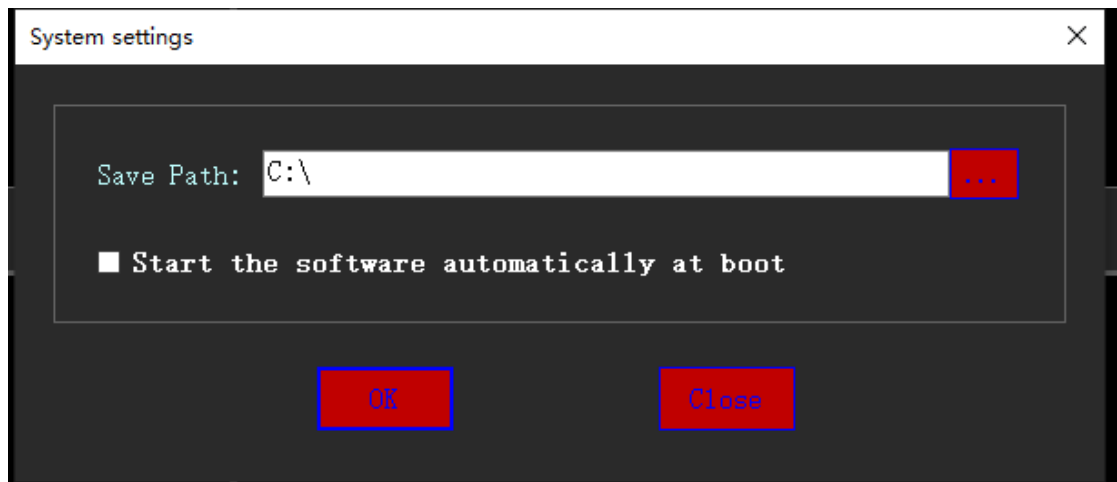
Streaming: rtsp://192.168.5.163/live/av

Run Stop Close

- Camera Name: you can set the camera name
- Camera IP: Camera's IP address
- VISCA Port: Camera's Visca Port(PTZ control port)
- VISCA Address: Camera's Visca's address
- Streaming: Camera's RTSP pull address'
- Run: Camera start button
- Stop: Camera stop button
- Close: close the set up page

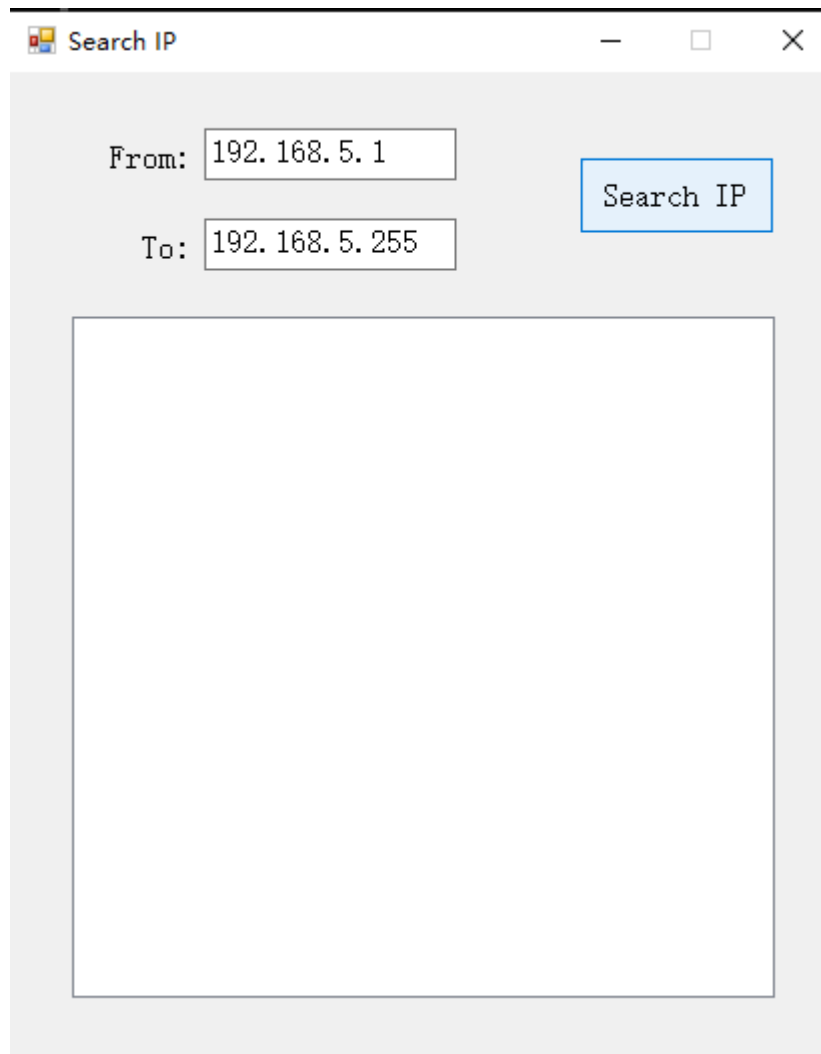
➤ Recording file storage directory setting

- Right-click and select "System Settings", click the "..." button to set the storage path, and click "OK" to s



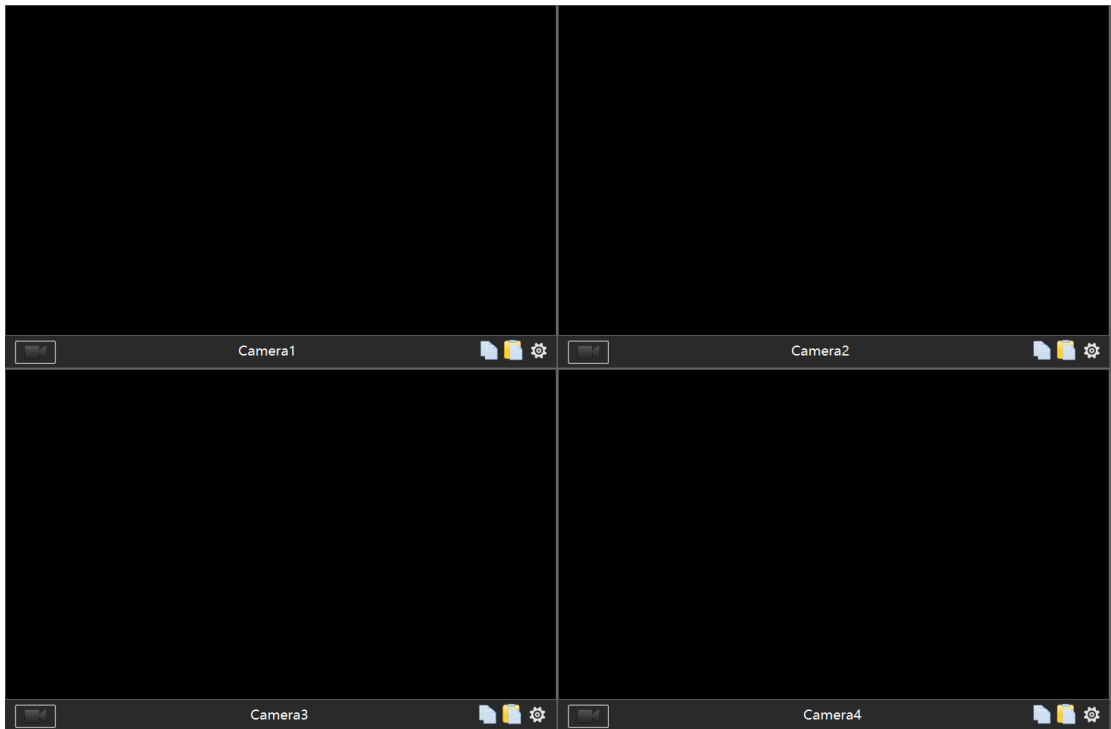
➤ Search IP

- Right-click and select "Search IP", click the "Search IP" to check the IP



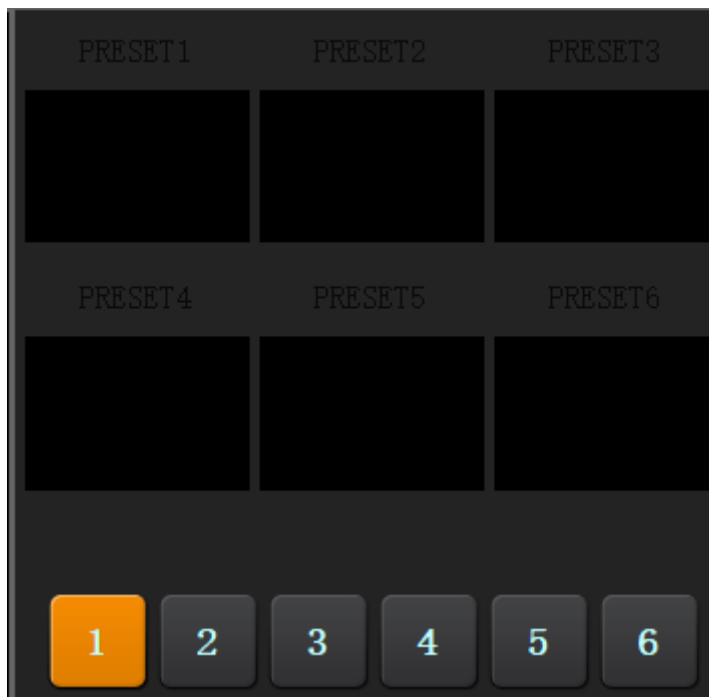
➤ Switch the 9 Channels / 4 Channels

Right-click and select "Switch to 4 Channels", and restart the App.

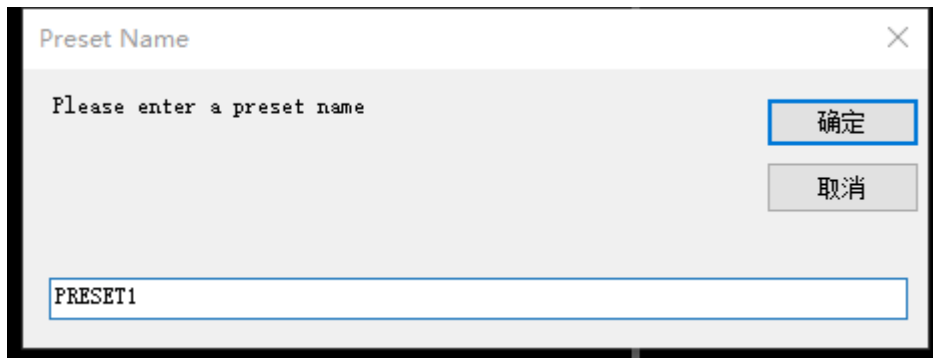


➤ Preset Position

1. After confirming the preset position by the PTZ direction keys, long press the "1" button to save the preset position



2. You can double click to change the preset position name



➤ PTZ Control Area



- PTZ Control: adjust the direction of PTZ camera
- Zoom Shift: one button shift Near/Middle/Far
- Camera speed: PTZ speed adjust from 1 to 6
- Zoom: Adjust the zoom of camera
- Focus: Adjust the focus of camera
- Aperture: Adjust the aperture of camera

➤ External X-Box for camera control

After the X-Box is connected to the computer USB port, you can use X-Box to control the camera directly.



1 PTZ control

2 Preset position-

3 Preset position+

4 Zoom in

5 Focus+

6 Focus-

7 Zoom out

8 Next Channel

9 Previous Channel

10 Camera Speed-

11 Camera Speed+